



Spain

SA PALMA DE MALLORCA

City: Palma de Mallorca
Population: 350,000
School Name: SA Palma de Mallorca
School Location: Heart of Mallorca
Website: www.spanishabroad.com/mallorca.htm

PALMA DE MALLORCA

The beautiful island of Mallorca is the largest, best-known and most popular of the Balearic Islands, some 155 miles from the Spanish mainland. It is an island that fulfils the expectations of all visitors: tourists seeking sandy beaches and romantic landscapes, hikers and bikers who want to discover the beauty of the island's mountain ranges and valleys. Those interested in culture and history can admire picturesque villages, churches and monasteries. Few islands in the world have the variety of Mallorca, and it is no wonder that, as well as being such a popular destination, many writers, artists and members of high society have chosen to settle in Mallorca.

Overall, the Balearics Islands offer something for everyone. While Menorca and Formentera remain largely unspoiled, great stretches of the coasts of Mallorca and Ibiza are home to developments catering to tourists on package vacations. Still, Mallorca's northwestern coast remains nearly as rough and remote as it was when George Sand and Frédéric Chopin spent a winter among its rugged mountains a century and a half ago. Of the four main islands, Mallorca and Ibiza are the most developed while Menorca and Formentera remain less populated and wilder. People go to Formentera for solitude and intimacy; Ibiza for wilderness with heavy concentrations of humanity; Mallorca for the mixture of Palma's urban cosmopolitanism with the wild north coast and interior; and Menorca for what may be the best blend of all of the above.

WHY PALMA DE MALLORCA?

- Urban Cosmopolitanism
- Hiking, biking and exploring
- Sandy beaches
- Inspirational landscapes
- Outdoor sports and activities
- Vacation atmosphere
- Historic towns and sites

SCHOOL OVERVIEW

SA Palma de Mallorca is situated in the heart of the city. As such everything of interest is just a few minutes away! The school is situated on the first floor of a modern apartment building. Apart from the reception area and administrative facilities, the school has seven classrooms and a common room with computers.

Students find the courses at the Spanish language school to be lively and varied. As with other schools the emphasis of all the program options is on verbal communication, pronunciation and on developing the student's vocabulary by role playing and simulating real life situations. Part of the teaching focuses on grammar with regular exercises and homework corrected by the teachers. Based on the student's level of Spanish, a selection of text analyses, articles, books, newspapers, film critiques and television programs are used in class. This in turn contributes to the learning process and allows the students to familiarize themselves with the Spanish culture. "We don't just want our students to 'know' Spanish, we want them to be able to use it!"

SCHOOL FACTS

- Lively classes
- Modern facilities
- Spanish conversation is emphasized
- Very personalized language school

PROGRAM OPTIONS

Standard Program. Group instruction, 4 classes per day, Monday to Friday, 12 students max per class. Classes are normally held from 9:30 a.m. to 1:30 p.m., although some classes may take place from 4:00 p.m. to 8:00 p.m. Maximum student input and participation are encouraged throughout the course, and the special needs of each individual student play an important role in planning the curriculum.

ACCOMMODATIONS

The school can organize accommodations for students with host families (single rooms, with half board) or in student apartments (single or shared rooms, no meals). In each case, the accommodation is normally reserved from the Sunday before the beginning of a course until the Saturday morning after the course ends. Extra nights can usually be arranged on request at an extra charge. As Palma is a relatively small city, most accommodation is less than 20 minutes from the school on foot or by public transport.

CULTURAL ACTIVITIES

The Spanish language school organizes a wide variety of social activities for their Spanish immersion students. Such exciting activities include:

- Welcome party for new arrivals
- Excursions to places of interest in and around Palma de Mallorca
- Spanish language films
- Open-air concerts by popular local musicians
- Exchange nights at which students can meet and talk with other students who are learning English or German at the school
- Unforgettable nightlife activities

All these activities, including local transport costs, are included in the course fee!

The program changes every couple of weeks so that students staying for longer periods will not have to repeat specific activities. All students are given a copy of the social program planned for the following two-week period when they arrive.

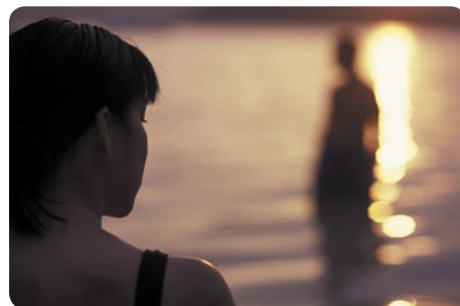
A typical two-week cultural program may be as follows:

Week 1

- 'Welcome Party'
- Guided tour of the Old Quarter and the Cathedral
- Classic train rides to Sóler
- Full-day excursion to one of the island's beautiful beaches

Week 2

- Visit to the Drac caves
- Exchange evening with students from IH Palma
- Night out at the 'tapas' bar and disco



Palma de Mallorca, Spain

